







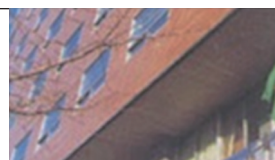

# Group Overview





# Group History



Leaping	2007 – Current	2007. 01	YANCHENG DONGKOOK, CHINA established (YANCHENG DONGKOOK AUTO PARTS)	2013. 03	COSMOLINK acquired	 
		2007. 08	KBI JAPAN founded	04	MB SEONGSAN (Name changed to KB METAL) GERMANY ICT acquired (Name changed to KDK AUTOMOTIVE)	
		2008. 02	KB REMICON founded (U.A.E.)	09	DONGKOOK IND. ASAN FACTORY #2 constructed	
		09	YOUNGIL NON-FERROUS METALS acquired	2014. 05	SEOKMUN ENERGY acquired	
		2009. 12	MODINE KOREA acquired (Name changed to KB AUTOTECH)	08	YOUNGIL NON-FERROUS METALS (Name changed to KB ALLOY)	
Changes			EJOEUN JUNGANG HOSPITAL acquired (Name changed to KB JANGYU HOSPITAL)	2016. 01	VIETNAM SH VINA CABLE acquired (Name changed to COSMILINK VIETNAM)	
		2010. 01	KB MEDICAL FOUNDATION founded	2017. 01	DONGKOOK MEXICO founded	
		12	MB SEONGSAN acquired	04	KB INTERNATIONAL GROUP (Name changed to KBI GROUP)	
		2011. 12	NOKSAN HANMAEUM HOSPITAL acquired (Name changed to KB NOKSAN HOSPITAL)	2019. 01	KBI Yusangtech acquired	
		2012. 01	KB GUMI HOSPITAL founded	2020.		
		12	KB AUTOTECH INDIA BRANCH founded			
The 2nd Foundation	1996 – 2006	1996. 05	HANJIN PLASTIC IND. acquired (Automobile components manufacturing)	1998. 11	DONGKOOK IND. ASAN FACTORY #1 constructed	  
		11	KUKIN IND. founded	2001. 08	DONGYANG STEEL PIPE acquired	
	1987 – 1995	1987. 03	Business separation KABUL GROUP / KB INTERNATIONAL GROUP	1990. 09	DONGKOOK IND. listed on stock exchange	
			KB SYNTHETICS founded	1994. 05	DONGWOON IND. acquired (Name changed to KB TECH)	
Growth	1975 – 1986	1977. 01	KABUL BUILDING constructed	1978. 11	KBI CONSTRUCTION founded	
Foundation	1955 – 1974	1955. 12	DONGKOOK IND. founded	1974. 05	KABUL founded	
		1956. 07	SHINHAN SILK Partnership Company founded			

# Group Affiliate Status



## Automobile Parts

KBI DONGKOOK IND.  
KDK AUTOMOTIVE  
KB AUTOTECH  
KBI ACETECH



## Material / Industrial Supplies

DONGYANG STEEL PIPE  
KBI METAL  
KBI COSMOLINK  
KBI COSMOLINK VINA CABLE  
KBI ALLOY



## Construction / Real Estate

KBI CONSTRUCTION  
KB REMICON  
KB INTERNATIONAL  
KBI JAPAN



## Textile / Paper

KB SYNTHETICS  
KBI YUSANG TECH



## Energy / Environment

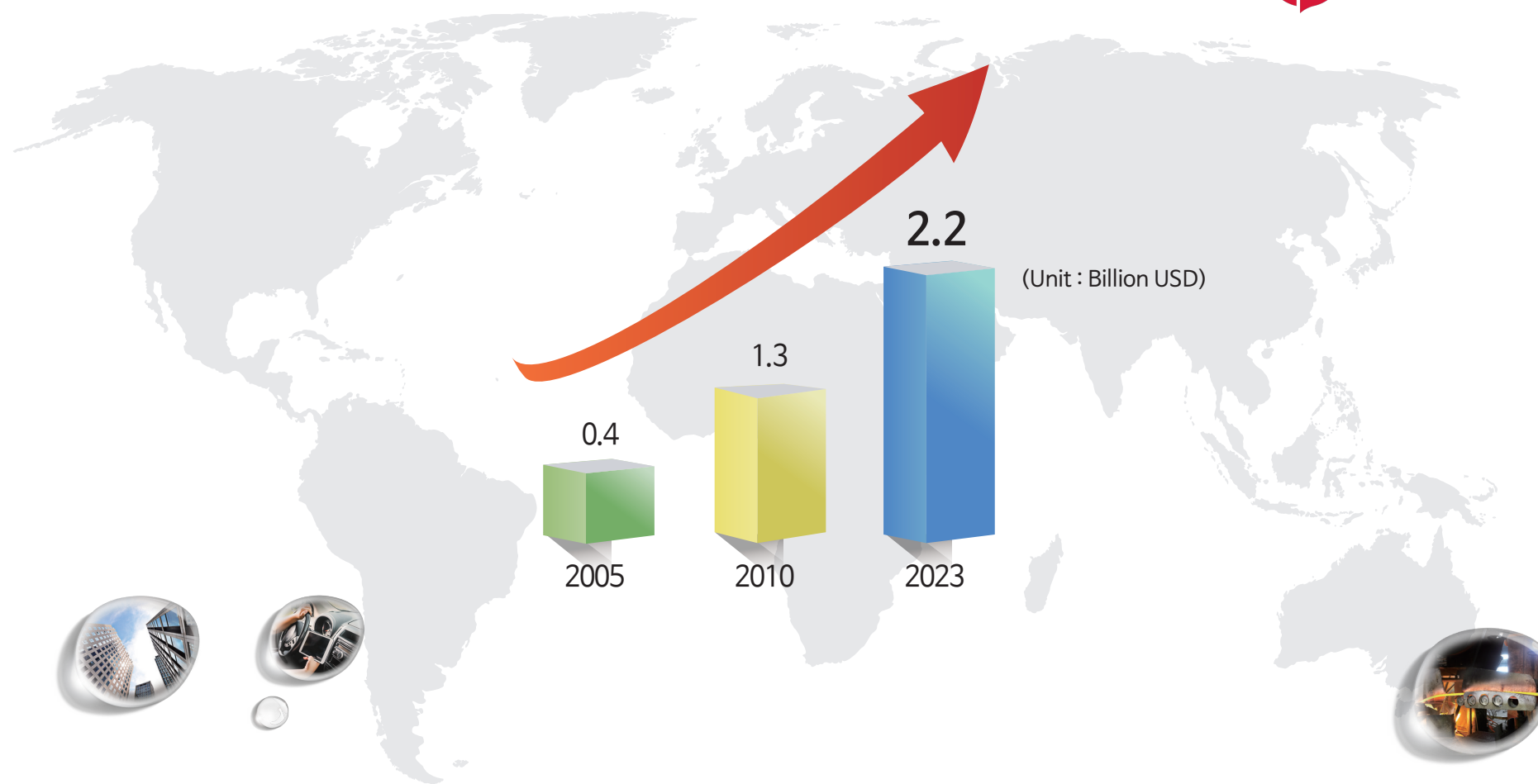
KBI KUKIN IND.  
KBI TECH  
SEOKMUN ENERGY  
KBI ULTRA  
DAEGU ECO



## Medical

KB MEDICAL FOUNDATION  
- KB JANGYU HOSPITAL  
- KB NOKSAN HOSPITAL  
- KB GUMI HOSPITAL

# Group Revenue



Sector	Automobile Parts	Material Industrial Supplies	Construction Real Estate	Environment / Energy / Medical / Textile	Total
FY 2023 Revenue Million USD (Revenue portion %)	900 (40%)	1,000 (47%)	100 (5%)	170 (8%)	2,170 (100%)

# KBI DONGKOOK IND.

[www.dongkook.net](http://www.dongkook.net)

Year of Establishment 1955

Revenue (unit : Million USD) 380

Employees 1,000

Manufacturer of automotive interior & exterior components, air conditioning and lamp-related parts

## Domestic Sites

ASAN FACTORY #1



Main products : GLOVE BOX, LUGGAGE BOARD

ASAN FACTORY #2



Main products : CRASH PAD MAIN, CONSOLE

ULSAN FACTORY



Main products : CRASH PAD MAIN, GLOVE BOX

GYEONGJU FACTORY



Main products : LUGGAGE BOARD

## Overseas Sites

CHINA YANCHENG FACTORY



Main products : CRASH PAD MAIN, LAMP

MEXICO HUSKERIA FACTORY



Main products : CRASH PAD MAIN, LAMP

Major Clients





KBI DONGKOOK IND.

## Interior Components



ASSIST HANDLE



CRASH PAD MAIN



CLUSTER FACIA



NOZZLE DEFROSTER



CRASH PAD LWR



CONSOLE



GLOVE BOX



KBI DONGKOOK IND.

## Exterior Components





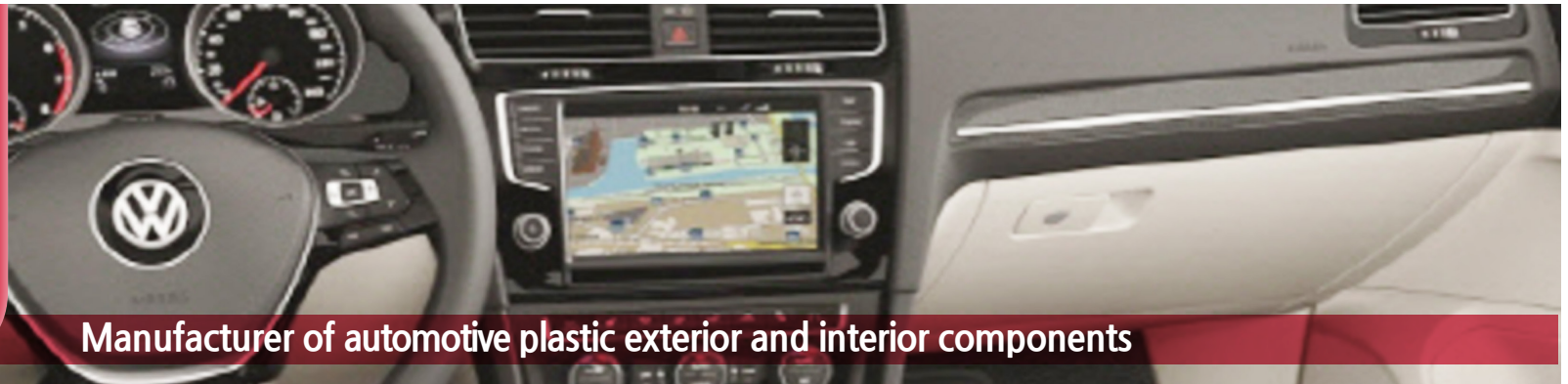
# KDK AUTOMOTIVE

[www.kdkautomotive.com](http://www.kdkautomotive.com)

Year of Establishment 1935

Revenue (unit : Million USD) 130

Employees 800



Manufacturer of automotive plastic exterior and interior components



## Sites

GERMANY WACHTERSBAACH FACTORY



Mail Products : CONSOLE, PILLAR

CZECH REPUBLIC TACHOV FACTORY



Mail Products : CONSOLE, PILLAR

SPAIN BORJA FACTORY



Mail Products : TRIM, DECO

## Main Products

CONSOLE



Major Clients



# KB AUTOTECH

[www.kbautotech.com](http://www.kbautotech.com)

Year of Establishment 1962

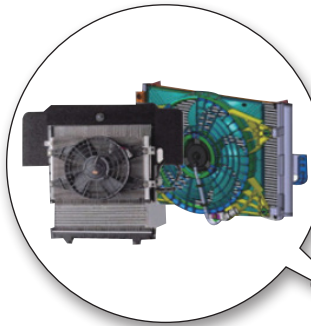
Revenue (unit : Million USD) 210

Employees 480

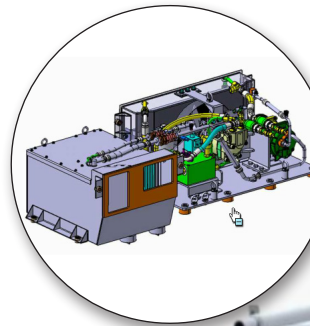
Sites : ASAN (KOREA), CHENNAI (INDIA)

Manufacturer of vehicle air conditioning and heat exchanging systems

## Main Products



Automobile air conditioning system



Military vehicles (Tank, Armored car) air conditioning system



Train air conditioning system



## Major Clients



Mercedes-Benz



# KBI ACETECH

Year of Establishment 2013  
Revenue (unit : Million USD) 40  
Employees 160  
Site : ASAN (KOREA)

Manufacturer of automotive interior and exterior components and the tools

## Main Products



Major Client

HYUNDAI  
**MOBIS**



# DONGYANG STEEL PIPE

[www.dysp.co.kr](http://www.dysp.co.kr)

Year of Establishment 1973

Revenue (unit : Million USD) 170

Employees 220

Global manufacturer of large diameter steel pipes (water, oil & gas and structural pipes, coated pipes)

## Sites

SEOUL OFFICE (KB BUILDING)



CHEONAN FACTORY



CHUNGJU FACTORY



## Main Products

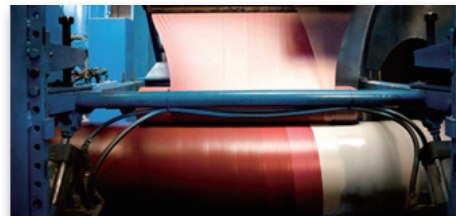
Line pipe for oil and gas



Heavy wall pipe for offshore, construction



Extruded polyethylene 3-layer coated pipes



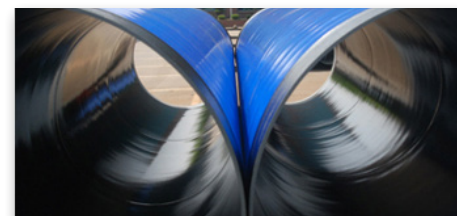
Various pipe lines



Pipe pile for foundation



Coated water pipe



## Major Clients





# KBI METAL

[www.kabulmetal.co.kr](http://www.kabulmetal.co.kr)

Year of Establishment 1985

Revenue (unit : Million USD) 510

Employees 200

Sites : SEOUL, EUMSEONG, DAEGU

Manufacturer of copper rods (JCR) for electric wires & automotive electronic components

## Metal Division

### Main Products

JCR Scrap (60,000t/year)



#### Major Clients



## Electric Components Division

### Main Products

AC MOTOR



STARTER MOTOR



VENTILATION BOOSTING MODULE



ALTERNATOR



SEAT VENTILATION HEATING MODULE



MOTOR CORE



#### Major Clients



**BorgWarner**



두산인프라코어



# KBI COSMOLINK

[www.kbicosmolink.co.kr](http://www.kbicosmolink.co.kr)

Year of Establishment 1965

Revenue (unit : Million USD) 120

Employees 120

Manufacturer of power, telecommunication and machinery line cables

## Sites

SEOUL OFFICE (KB BUILDING)



OKCHEON FACTORY



Major Clients



KEPCO

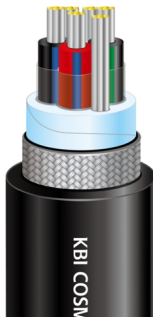
SAMSUNG

POSCO  
E&C

## Main Products



THHN / THWN-2  
(UL83)



TC-ER Cable  
(UL 1277)



Low Inductance Cable  
(UL 758)



Tree Wire



MV URD Cable  
(UL 1072)



ACSR



3-layer Insulated Wire (TIW)  
(UL 2353, EIS)



# KBI COSMOLINK VINA

[www.cosmolinkcable.com.vn](http://www.cosmolinkcable.com.vn)

Year of Establishment 2004

Revenue (unit : Million USD) 30

Employees 130

Manufacturer of power, telecommunication and machinery line cables

## Sites

Hanoi Office



Vinh Yen Factory (VINH PHUC)



Major Clients

**SAMSUNG**



## Main Products

Building Wires



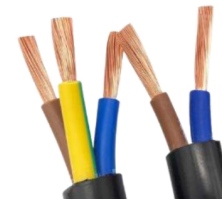
Bare Copper Wires



Overhead Line Wires



Power Cord



TIW-M



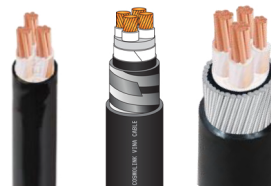
ACSR Cables



Control Cables



Power Cables



Fire Resistant Cables



Instrument Cables



# KBI ALLOY

[www.kbialloy.com](http://www.kbialloy.com)

Year of Establishment 1963

Revenue (unit : Million USD) 40

Employees 60

Sites : SEOUL, ASAN

Manufacturer of specific purpose copper alloy materials and parts

## Main Products

Spot Resistance Welding Alloys



Rod Wire for Cap-tip for Automobile Spot-welding and Co2-Tip for Welding Big Ship



Billet and Bare Wire for Aircraft Wire



## Major Clients



Gadi  
Company  
Inc.



JL OBARA KOREA



# KBI CONSTRUCTION

[www.kbconst.co.kr](http://www.kbconst.co.kr)

Year of Establishment 1978

Revenue (unit : Million USD) 70

Employees 60

Civil engineering, contract work and plant construction company

## Main Business

### Roads and highways



West Suwon-Uiwan road

### Railroad



KTX 11-1 section Establishment of roadbed

### Residences



Godeok station KB Myungga City

### Educational facilities



Dogok library

### Business facilities



Gasan KB Great valley

### Ports



Pohang Yeongil bay breakwater

### Plants



Gyeongju sewage treatment facility

### Overseas



Laos GMS road improvement



# KB REMICON

[www.kbremcon.ae](http://www.kbremcon.ae)

Year of Establishment 2008

Revenue (unit : Million USD) 20

Employees 35

Manufacture of ready-mix concrete

## Site

AJMAN PLANT (U.A.E.)



SHARJAH PLANT (U.A.E.)



## Main Business





# KB INTERNATIONAL

Year of Establishment 1970  
Revenue (unit : Million USD) 5  
Employees 25

Domestic real estate investment & development

## Main Business

Real estate lease and building management



KB International Group's HQ (KB building)



Gunpo plant



# KBI JAPAN

[www.kbijapan.com](http://www.kbijapan.com)

Year of Establishment 2007

Revenue (unit : Million USD) 150

Employees 200

Real estate investment & development, and hospitality management in Japan

## Main Business

Real estate lease & building management



Sanco building (Japan office)

Shimbashi building

## Golf Resorts



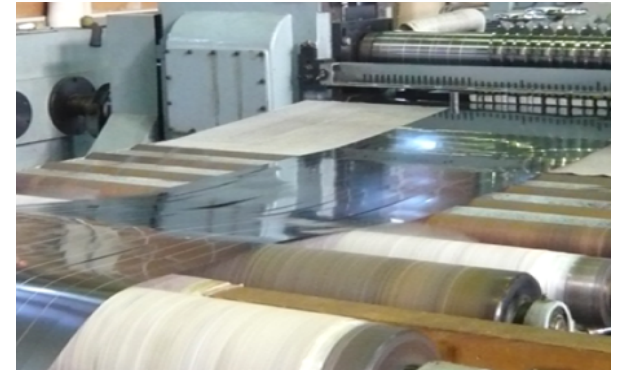
Yabuki Golf Resorts

## DENSO Industry



Operates as a wire harness processing firm in JPN, CHN, MMR

## MYODO METAL



Niigata Prefecture, Manufactures and sells cold-rolled stainless steel

## RABO KIGOSHI



Manufacturing and selling shoes in JAPAN (raboki-webstore.com)



# KB SYNTHETICS

[www.kbsyn.co.kr](http://www.kbsyn.co.kr)

Year of Establishment 1990

Revenue (unit : Million USD) 45

Employees 15

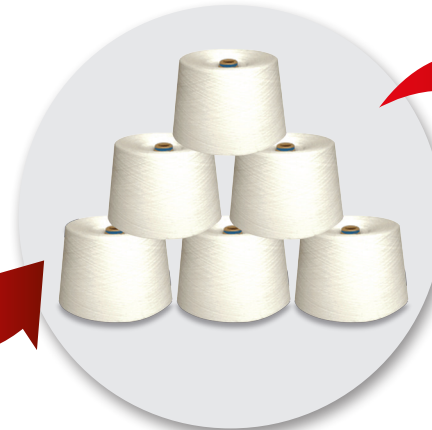
Site : SEOUL

Distributor of textile yarns

## Main Products



- POLY-RAYON
- POLY
- RAYON
- VISCOSE FILAMENT
- POLY-COTTON



## Major Clients



삼성물산



CHONBANG



일신방직



# KBI YUSANGTECH

[www.yusangtech.com](http://www.yusangtech.com)

Year of Establishment 2000

Revenue (unit : Million USD) 7

Employees 50



Manufacturer specializing in paper food containers

## Sites

SEOUL OFFICE (KB BUILDING)



BUSAN FACTORY



Major Clients



## Main Products



Paper Containers

As a microwave oven-only insulating double container that can be used for cooking conveniently, it is suitable for hot food containers such as ramen and soup.



Beverage Paper Cup

It is a product optimized for takeout/franchise products using high-quality raw paper for food and beverage.



# KBI TECH

[www.kbitech.kr](http://www.kbitech.kr)

Year of Establishment 1982

Revenue (unit : Million USD) 20

Employees 48

Incinerator & supplier of renewable energy

## Site

INCHEON PLANT (HQ)



## Major Clients

coway  
EnTech

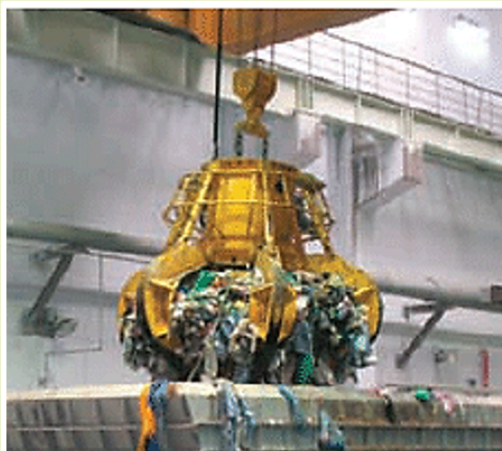
청라에너지주식회사

경인양행  
KISCO  
ORGANIC COLORS AND CHEMICAL SOLUTIONS

(주)유성화학  
YOUSUNG CHEMICAL CO.

## Main Business

### Waste Hauling Business



- Sector : Collection and transportation of waste
- Coverage area : Nationwide

### Incineration & Steam Generation



- Sector : Interim disposal  
Sales of heat & steam
- Volume : Incineration - 150t/day  
Steam - 200,000t/yr
- Item : General and hazardous industrial waste



# KBI KUKIN IND.

[www.kukin.co.kr](http://www.kukin.co.kr)

Year of Establishment 1996

Revenue (unit : Million USD) 55

Employees 75

Largest domestic incinerator and landfill operator & supplier of renewable energy

## Sites

GUMI PLANT



GUNSAN PLANT



## Main Business

Incineration & Steam Generation



- Sector : Interim disposal  
Sales of heat & steam
- Volume : Incineration ~200t/day  
Steam ~ 250,000t/yr
- Item : General and hazardous industrial waste

Landfill



- Sector : Final disposal
- Capacity : 6.9 mil. m<sup>3</sup>
- Item : General and hazardous industrial waste

Major Clients

**HYOSUNG**

삼성코닝정밀유리 

 **LG디스플레이**

 **Youngdo Velvet**

 **SK실트론**



# SEOKMUN ENERGY

[www.smep.co.kr](http://www.smep.co.kr)

Year of Establishment 2013

Revenue (unit : Million USD) 50

Employees 58

Supplier of biomass combined heat and power

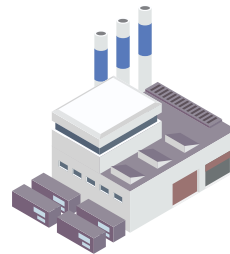
## Site

DANGJIN



Electricity generation capacity : 38.9 MW

## Main Business

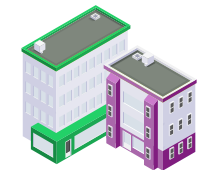


Dangjin Thermal Power Plant

Heat supply  
(Since 2018)

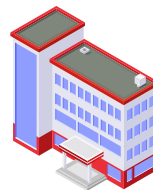


Heat and steam sales  
(84% of total load)



Industrial complex

Electricity sales  
(Since 2016)



Korea Power Exchange

SEOKMUN combined  
heat & power plant

Heat sales  
(16% of total load)



Residential complex

Recycled fuel (Wood chips)



## Major Clients





# KBI ULTRA

Year of Establishment 2003  
Revenue (unit : Million USD) 5  
Employees 17

Recycling food waste to produce animal feed and biodiesel raw materials

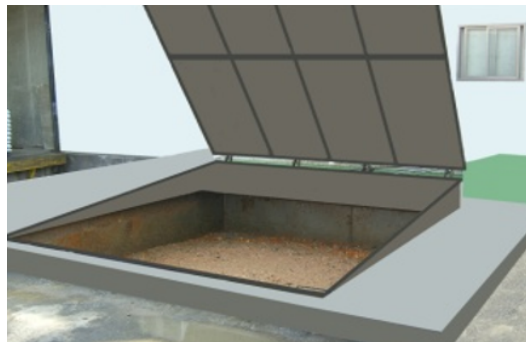
## Sites

ANSAN PLANT



## Main Business

Food waste Input



Dehydration



Crushing and automatic screening



Shipment





# DAEGU ECO

Year of Establishment 2017  
Revenue (unit : Million USD) 8  
Employees 32

## Sewage sludge dry fueling facility

### Sites

SINCHEON PLANT (Capa : 230t / day)



SEOBU PLANT (Capa : 115t / day)



### Main Business

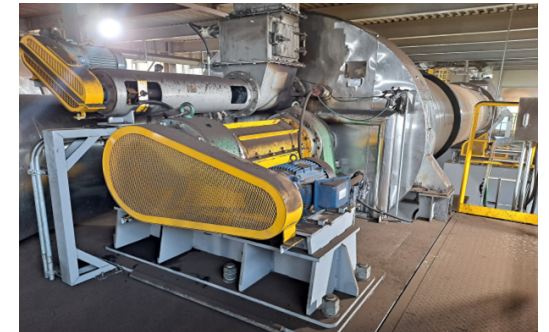
Bring in and supply



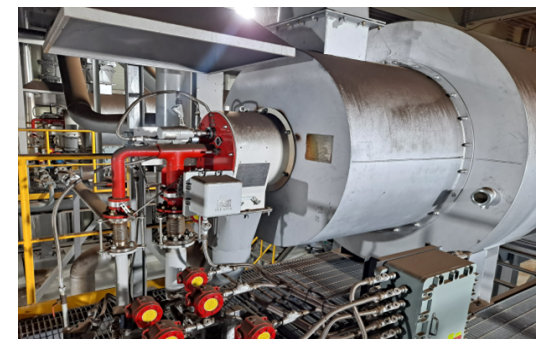
Get rid of the odor



Dry



Supply of heat





# KB HOSPITAL

[www.kbhospital.com](http://www.kbhospital.com)

Revenue (unit : Million USD) 55  
Employees 450



Healthcare provider of the local communities

## Sites

One and only general hospital in Jangyu



### KB JANGYU HOSPITAL

Establishment 2006

167-13, Jangyu-ro, Jangyu-myeon, Gimhae-si,  
Gyeongsangnam-do, Korea

Provider of healthcare and specialized checkups  
for the nearby industrial complex



### KB NOKSAN HOSPITAL

Establishment 2011

24-8, Noksan Industrial Complex 321-ro,  
Gangseo-gu, Busan, Korea

Rehabilitation center for acute nervous system  
disorders



### KB GUMI HOSPITAL

Establishment 2012

280-3, 3 Industrial Complex 1-ro, Gumi -si,  
Gyeongsangbuk-do, Korea



Official contractor of medical  
hotline with 4 major  
university hospitals in Korea



**SNUH**  
서울대학교병원

**SAMSUNG**  
삼성서울병원



**세브란스병원**  
SEVERANCE HOSPITAL

# Global Network

